

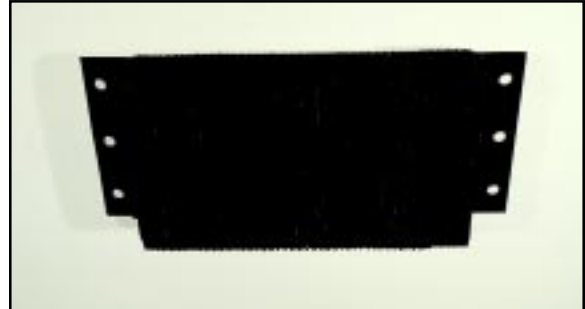
# Dock Bumpers

Prevent Unnecessary Damage to Loading Docks & Trucks

## Laminated Bumpers

Laminated style dock bumpers provide durable, economical protection for your loading dock and trucks.

- Unequaled Endurance
- Resists Weathering
- Abrasion Resistant
- Virtually Maintenance Free



### Construction:

Fabric reinforced rubber from recycled truck tires. Pads are laminated between structural angles and held together by 3/4" steel tie rods.

### Installation:

Bolt or weld. Bolt holes are 13/16"



Dock Leveler Style

Model: 1012-4.5F

## Specifications

### Horizontal

Style

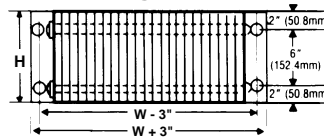
10" High Models

(Height) x (Width) x (Projection)  
(H) x (W) x (A)

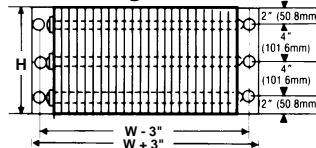
4.5" Projection      6" Projection

1012-4.5	1012-6
1014-4.5	1014-6
1018-4.5	1018-6
1024-4.5	1024-6
1030-4.5	1030-6
1036-4.5	1036-6

10" High Models



12" High Models



12" High Models

(Height) x (Width) x (Projection)  
(H) x (W) x (A)

4.5" Projection      6" Projection

1212-4.5	1212-6
1214-4.5	1214-6
1218-4.5	1218-6
1224-4.5	1224-6
1230-4.5	1230-6
1236-4.5	1236-6

"D" Dimension is figured on bolt hole centers.

Vertical

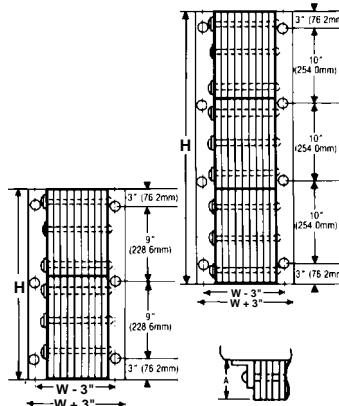
Style

(Height) x (Width) x (Projection)  
(H) x (W) x (A)

4.5" Projection      6" Projection

20-11-4.5	20-11-6
24-11-4.5	24-11-6
30-11-4.5	30-11-6
36-11-4.5	36-11-6

"D" Dimension is figured on bolt hole centers.

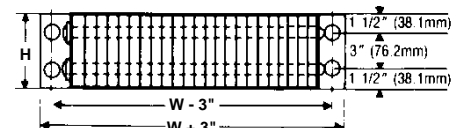


6" High Models

(Height) x (Width)  
(H) x (W)

Models - 624  
636

Projection is 4 1/2"



# Dock Bumpers tailored to your needs!

## EXTRUDED FENDER BUMPERS

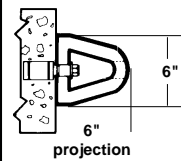
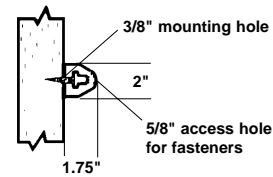
- Appropriate for outdoor or indoor protection.
- In-Plant wall protection from forklifts and other material handling vehicles.
- Applications include Loading Docks, Parking Garages, and Marinas.
- Contact factory for special lengths.

### Benefits:

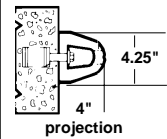
- Installs easily.
- Resistant to all types of weather.
- One piece construction.

### Installation:

Anchor bolts are easily installed through existing holes in dock.



5/8" Mounting Hole  
1.25" Access Hole for Fastener



5/8" Mounting Hole  
1.25" Access Hole for Fastener

## SPECIALTY MOLDED BUMPERS

Manufactured from fiber reinforced prime rubber containing nylon and polyester, all models have predrilled, countersunk mounting holes for easy installation, and are drilled to accept 3/4" anchor bolts.

### Benefits:

- Economical.
- Unique design and construction achieves high impact resistance and long life.
- Immune to all weather conditions.

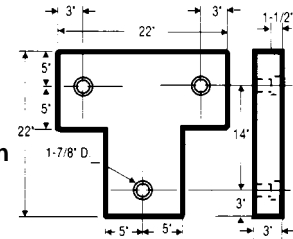
### Installation:

Anchor bolts are easily installed through existing holes in dock.

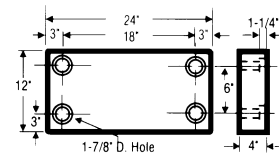


**T-Series (T-22)**

3" Projection  
22" Tall  
22" Wide

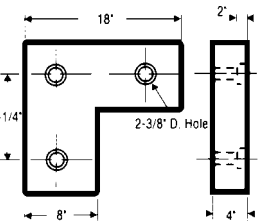


3" projection :12" tall :24" wide



**L-Series (L-1818)**

4" Projection  
18" Tall  
18" Wide



## MOLDED BUMPERS

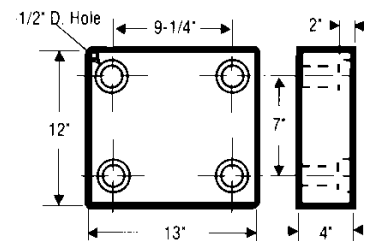
These bumpers are excellent for virtually any application. Whether your use is for high traffic docks or In-Plant wall protection, these very rugged bumpers are made to incur excessive friction and abrasion.

### Benefits:

- Resistant to abrasion, friction, impact, wear and corrosion.
- Impervious to weather damage.
- 2-piece construction fully assembled and ready for installation.

### Installation:

Installation is easy -- 3/4" Anchor bolts are installed through existing holes in dock.



Dimensional Drawing for Models:

**B-1213-4  
B-1213-4PF**

# Enhance your dock with our quality bumpers!

## TRAILER AND CRANE BUMPERS

Manufactured from fiber reinforced prime rubber containing nylon and polyester, all models have predrilled, countersunk mounting holes for easy installation, and are drilled to accept 3/4" anchor bolts.

### Benefits:

- Economical.
- Unique design and construction achieves high impact resistance and long life.
- Immune to all weather conditions.

### Installation:

Anchor bolts are easily installed through existing holes in dock.



Model #	Dimensions	Bolt hole (dia.)	Bolt hole (ctr.)
TB-10	2½"W x 6"L x 3½"H	½" Bolt Hole	2½" on ctr.
TB-20	3½"W x 6"L x 3½"H	½" Bolt Hole	3" on ctr.
TB-70	2¼"W x 16"L x 2"H	½" Bolt Hole	6½" on ctr.
TB-90	5¼"W x 8"L x 3½"H	¾" Bolt Hole	3" on ctr. (wide) 5½" on ctr. (tall)

## HARDENED MOLDED BUMPERS

Composed of fiber reinforced rubber containing nylon and polyester, all models have predrilled, countersunk mounting holes for easy installation, and are drilled to accept 3/4" anchor bolts.

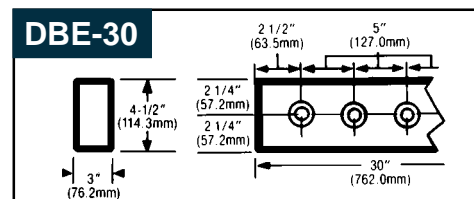
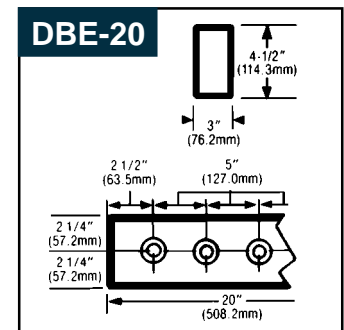
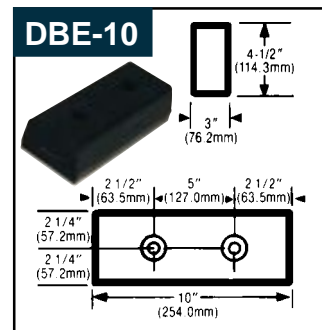
### Benefits:

- Maintenance-free.
- Economical.
- Unique design and construction achieves high impact resistance and long life.
- Immune to all weather conditions.

### Features:

- Makes for a clean, neat, attractive dock area.
- Molded in one piece of all new rubber compounds.
- Resistant to warping, rust, rotting, or hardening.

## DBE Series



## BUMPER STOPS

Bumper Stops are excellent for protecting vehicles when the parking places are located right next to building walls.

### Benefits:

- Strong, durable, high impact resistant solid rubber bumper.
- Utilize Vertically or Horizontally.
- Optional Recessed yellow and black caution stripe.

### Installation:

Installation is easy -- 3/4" Anchor bolts are installed through existing holes in dock.



## INSTALLATION HARDWARE

**Model No. - AS-344**  
Anchor sleeves 3/4" x 4.25"

**Model No. - AS-348**  
Anchor sleeves 3/4" x 6.25"

**Model No. - BIT-3/4**  
3/4" Masonry Bit

Contact factory for special lengths.

**SPECIFICATIONS SUBJECT TO CHANGE WITHOUT NOTICE ON ALL BUMPERS**

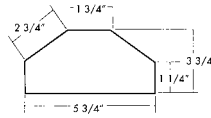
# Parking Lot Accessories

Economical • Easy to Use • Durable

## CAR STOPS

### Specifications

- These easy-to-install Car Stops can help you control parking safety...no broken concrete stops or dangerous rods exposed.
- No costly painting or maintenance of Car Stops.
- Lightweight -- easy to remove when your needs change -- move for snow removal or seal coating.
- Solid recycled plastic construction will keep Car Stops from yielding to moisture or rotting.
- Warranted against breakage for one full year.
- Use Model CS-33-B for Blue Handicap Parking Spots.
- Dimensions are 72"L x 5.75"W x 3 $\frac{3}{4}$ "H.  $\frac{1}{2}$ " mounting holes.
- Hardware NOT included.



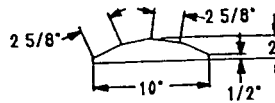
Model:  
CS-33-Gray



## SPEED BUMPS

### Specifications

- Help control drivers in dangerous areas...protect people and property.
- One-person installation and relocation, make them very economical...easy-to-use and cost effective.
- Total yellow design eliminates costly painting and maintenance. Surface resists marring by oil, road salt, sunlight and chemicals.
- Unlike lumber, it does not leach out polluting chemicals, and protects against rotting, termite damage and corrosion.
- Dimensions are 72"L x 10"W x 2"H.  $\frac{1}{2}$ " mounting holes.
- Hardware is included.
- Use Model SB-AKT for Optional Adhesive Kit.



Model - SB-36



## SPEED BUMP & DOCK SAFETY SIGNS

Model - SBS-1012

**CAUTION**  
**SPEED**  
**BUMP**

### Specifications

Solid aluminum construction  
signs measure  
10" high by 12" wide  
Four (4) predrilled holes  
are provided for quick installation.

Model - DWS-1012

**ALL DRIVERS**

- Chock Wheels
- Set Brakes
- Put Jacks Under  
Nose of Detached  
Semi-Trailers
- Stay in Dock Area
- Shut-Off Engine



**Vestil Manufacturing Company**

P.O. Box 570

Angola, IN 46703

Ph.: (219) 665-7586

Fax: (219) 665-1339

E-mail: [vestil@dmci.net](mailto:vestil@dmci.net) Web: [www.vestilmfg.com](http://www.vestilmfg.com)

Bulletin-DBB-1095

**Distributed by:**