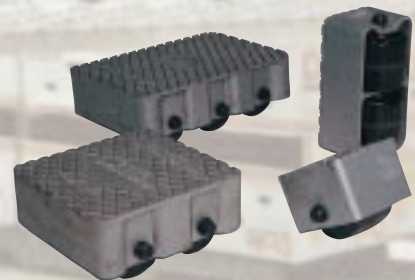
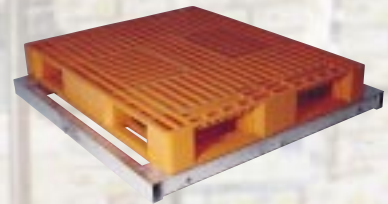


# DOLLIES

## Problem Solvers For Everyday Moving Projects



## Steel Hugger Dolly

This Lo-Profile Steel Dolly allows loading and unloading of materials at floor level. Handles loads up to 840 lbs. and will carry a product that is 21" wide. Its (4) 3" x 1 1/4" hard rubber wheels allows easy turning. Overall Size of unit is 22"W x 30"L x 4"H. Weight 55 lb.

Model - LFH-55



## Aluminum Channel Dollies

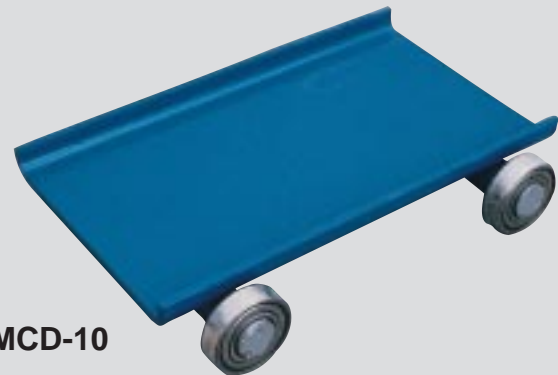
This sturdy dolly is constructed of aluminum channel which will support 2,000 lb. capacity. Lightweight design allows personnel to conveniently pick up and carry to destination. Four swivel 5" x 2" phenolic casters will provide extra mobility on tight turns.



Model No.	Capacity	Overall Dimensions	Weight
ACP-37	2,000 lb.	24"W x 36"L x 10"H	37 lb.
ACP-40	2,000 lb.	24"W x 42"L x 10"H	40 lb.

## Low Profile Machine Dolly

This Lo-Profile Steel Dolly allows loading and unloading material at floor level. Its platform size is 8.5"W x 12"L x 1.75"H and can handle loads up to 1,000 lb. Four swivel 3" x 1 1/4" hard rubber wheels allows easy turning. Unit is painted Royal Blue. Weight 10 lb.



Model - MCD-10

## Steel Wedge Dolly

These lever action movers are excellent to transport file cabinets, appliances, drums, crates and cartons. Heavy duty construction is designed to be counterbalanced to prevent load tippage. Final product is vinyl coated to help eliminate scrapes and scratches. Equipped with hard rubber wheels (2) 3" x 1.5" axle mounted and (2) 2.5" x 1.25" swivel.



Model No.	Capacity	Platform Size	Weight
NPL-21	600 lb.	15"W x 32"L	21 lb.
NPL-24	600 lb.	18"W x 32"L	24 lb.

## Plate Dollies

Plate Dollies are manufactured with a 3/8" raised pattern, aluminum or steel treadplate. A smooth deck is available upon request. Dollies are approximately 6-5/8" high, and have 4" x 2" molded rubber wheels standard, 2 locking swivel and 2 rigid. Casters are welded on steel dollies, and bolted on the aluminum. Capacity is 1,400 lb.



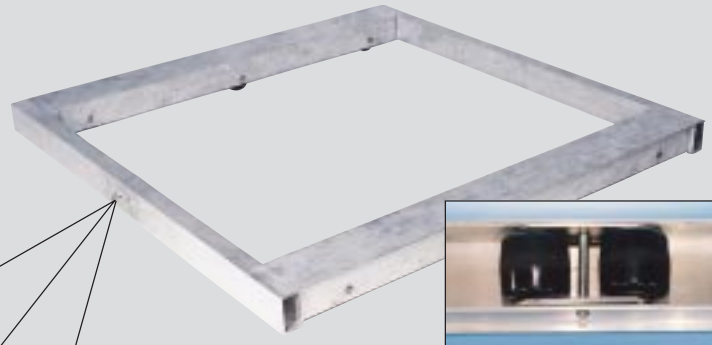
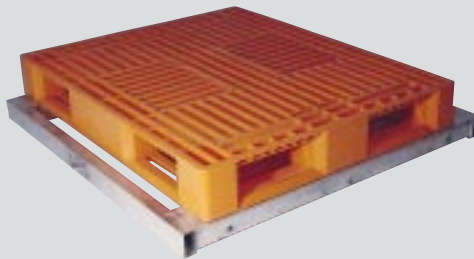
MODEL NUMBER	OVERALL SIZE	WEIGHT (lbs.)
VPLDO/S-1418	14"W x 18"L	47
VPLDO/S-1824	18"W x 24"L	67
VPLDO/S-2430	24"W x 30"L	100

MODEL NUMBER	OVERALL SIZE	WEIGHT (lbs.)
VPLDO/A-1418	14"W x 18"L	22
VPLDO/A-1824	18"W x 24"L	29
VPLDO/A-2430	24"W x 30"L	39



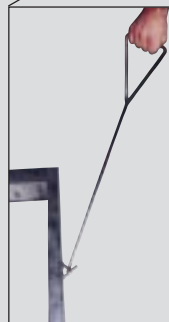
## Aluminum Pallet Dolly

- Solid open frame welded aluminum construction
- Available in tilting & non-tilting models
- Available with handle or support crossbar
- 3 1/2" rollers with sealed bearings



### OPTIONS

1. Optional Loops and Handle work great on any "Move Master" for pushing or pulling either end.
2. A center support crossbar is available as an extra support on larger loads.



4,000 lb. Cap. 6 Rollers		6,000 lb. Cap. 8 Rollers		8,000 lb. Cap. 10 Rollers	
MODEL NO.	WGT. lbs.	MODEL NO.	WGT. lbs.	MODEL NO.	WGT. lbs.
DOL-3636-6T	32	DOL-3636-8T	37	DOL-3636-10T	40
DOL-3642-6T	34	DOL-3642-8T	40	DOL-3642-10T	43
DOL-3648-6T	35	DOL-3648-8T	41	DOL-3648-10T	44
DOL-4048-6T	36	DOL-4048-8T	42	DOL-4048-10T	45
DOL-4242-6T	37	DOL-4242-8T	43	DOL-4242-10T	46
DOL-4848-6T	38	DOL-4848-8T	44	DOL-4848-10T	47

For Non-Tilting models add the suffix NT.  
Non-Tilting models available in 4,000 lb. capacities only.

## Steel Propel Dollies

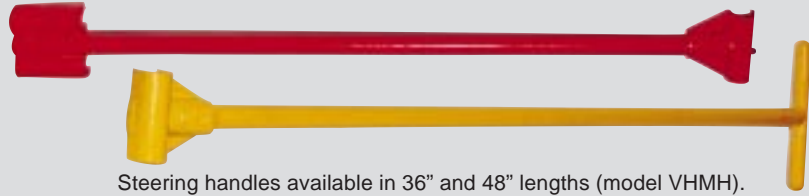
Propel Dollies are easy to use and provide efficient moving time. Aluminum, box-like frames have integral sides, webs and deeply fluted tops. Rollers have self contained, press-fit, roller bearings with hardened and ground spacers. They are excellent for moving heavy crates and machinery. Note: Except when used individually, corners should be turned by lifting the load and rotating each dolly individually.



MODEL #	CAPACITY	PLATFORM SIZE	NO. OF ROLLERS	WEIGHT
VPRDO-1	1,500 lb.	4.5" x 4.5"	1	4 lb.
VPRDO-2	3,000 lb.	4.75" x 8.5"	2	7 lb.
VPRDO-4	6,000 lb.	8.5" x 8.5"	4	14 lb.
VPRDO-6	3,000 lb.	8.5" x 12.5"	6	20 lb.

# Machine Rollers

Steel Dollies feature one-piece cast frames of high-strength, weldable, annealed, ductile iron. The full-width swivel top rotates 360° on chrome steel ball bearings. A spring loaded locking mechanism can be engaged in notches at 45° intervals (excludes VHMS-2).



Steering handles available in 36" and 48" lengths (model VHMH).

Model No.	Size (W x L)	Capacity	Overall Height	Weight
VHMS-2	3.25" x 8"	2,000	3.5"	10 lb.
VHMS-8	5.5" x 10"	8,000	5"	31 lb.
VHMS-15	5.75" x 10.5"	15,000	5"	39 lb.
VHMS-30	6.5" x 12.75"	30,000	5"	52 lb.

# Economical Wood Dollies

These rugged hardwood dollies are excellent in:

☞ FACTORY'S

☞ WAREHOUSE'S

☞ OFFICE'S

☞ HEIGHT 7-1/4"

☞ CASTERS 4 x 1-1/2"



**Solid Deck Style**  
Model - HDOS



**Furniture Style**  
Model - FDOL



**Flush Deck Style**  
Model - HDOF

MODEL NUMBER	CAPACITY (POUNDS)	SIZE (W x L)	WEIGHT (POUNDS)
HDOS-1624-9	900	16" x 24"	18 lbs.
HDOS-2436-9	900	24" x 36"	27 lbs.
HDOS-1624-12	1200	16" x 24"	19 lbs.
HDOS-2436-12	1200	24" x 36"	28 lbs.
FDOL-1624-9	900	16" x 24"	8 lbs.
FDOL-2436-9	900	24" x 36"	27 lbs.
FDOL-1624-12	1200	16" x 24"	19 lbs.
FDOL-2436-12	1200	24" x 36"	28 lbs.
HDOF-1624-9	900	16" x 24"	15 lbs.
HDOF-2436-9	900	24" x 36"	21 lbs.
HDOF-1624-12	1200	16" x 24"	16 lbs.
HDOF-2436-12	1200	24" x 36"	22 lbs.



The Furniture Dolly is cushioned with a vinyl cover, made of 18 oz. material, to prevent scratches.

# Pro-Mover

- Solid open frame welded steel construction
- Four swivel casters for optimal maneuverability
- Caster Size - 6" x 2" mold on rubber
- Capacity 2,000 lb.



Model	Size (W x L)	Weight
PRM-4048	40" x 48"	59 lb.
PRM-4248	42" x 48"	61 lb.
PRM-4848	48" x 48"	65 lb.



**Vestil Manufacturing Company**

P.O. Box 570

Angola, IN 46703

Ph.: (219)665-7586

Fax: (219)665-1339

E-mail: vestil@dmci.net Web: www.vestilmfg.com

**Distributed by:**