

FORK TRUCK ATTACHMENTS

FORK TRUCK BOOMS

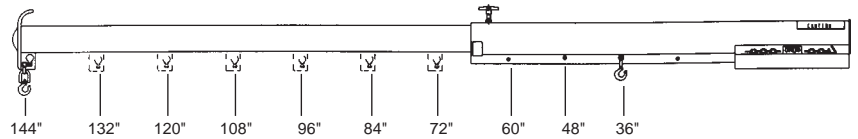
Econo Boom

LM-EBT & LM-EBT-6

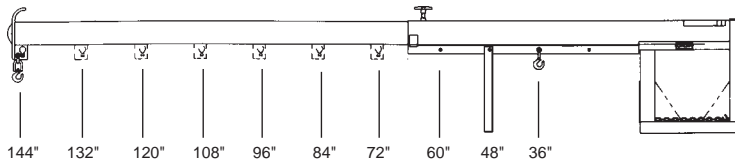
- Telescoping length is adjustable from 72" to 144"
- Capacity 4,000 lb. and 6,000 lb.
- Fork openings measure 7.25" x 2.25", 24" on center
- Weight 375 lbs. and 465 lbs.



Lift Master Booms are easily attachable to any fork truck. A 36" safety chain secures the boom to the fork truck for safe operation. Other features include self-storing design, infinitely adjustable locking screw, cast handle end cap, and telescoping limiting stop. All welded steel construction. The Lift Master Boom increases the versatility of your fork truck. It allows you to pick-up and move long and awkward loads or rounded and odd shaped loads. Moving down narrow aisles or over immovable barriers is made easier. Each unit includes two lifting hooks.



Maximum Single Hook Boom Capacities* (lbs.)										
Model	Hook Position									
	144"	132"	120"	108"	96"	84"	72"	60"	48"	36"
LM-EBT	1750	2000	2250	2500	2750	3000	3250	3500	3750	4000
LM-EBT-6	1800	2000	2300	2600	3000	3500	4000	4500	5000	6000



Heavy Duty Boom

LM-1T-6

- Telescoping length is adjustable from 72" to 144"
- Heavy-duty 6,000 lb. capacity
- Weight 585 lbs.
- Fork openings measure 7.25" x 2.25", 24" on center



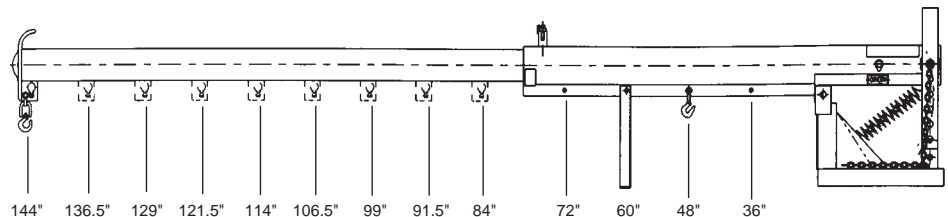
Maximum Single Hook Boom Capacities* (lbs.)										
Model	Hook Position									
	144"	132"	120"	108"	96"	84"	72"	60"	48"	36"
LM-1T-6	1800	2000	2300	2600	3000	3500	4000	4500	5000	6000

Orbital Boom

LM-OBT



The **LM-OBT** is equipped with a unique counterbalance system and safety drop-lock pin configuration that allows for quick and easy height adjustment. The telescoping length is infinitely adjustable from 84" to 144". Fork openings measure 7.25"w x 2.25"h, 24" on center. The LM-OBT has a 4,000 lb. capacity and weighs 510 lbs.



Maximum Single Hook Boom Capacities* (lbs.)													
Model	Hook Position												
	144"	136.5"	129"	121.5"	114"	106.5"	99"	91.5"	84"	72"	60"	48"	36"
LM-OBT	1750	1945	2060	2220	2375	2450	2690	2845	3000	3250	3500	3750	4000

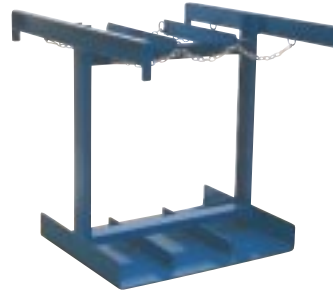
*Attaining maximum capacities depends on the size and fork capacity of the lift truck used.

Other sizes & styles available on all units.

HOISTING HOOKS

D-FORK-4 & D-FORK-10

The Hoisting Hook transforms any fork truck into an overhead lifting hoist. Fork openings are 8" w x 2.75" h. The openings are located on 13" centers. A safety chain with snap hook is used to secure this attachment to the trucks carriage. This Hoisting Hook unit includes a heavy duty swivel hook with safety clip.



CYLINDER CADDY

CYL-190

Forklift **Cylinder Caddy** is designed to hold six cylinders. Cylinders roll in and out individually for convenient access without having to move other cylinders. Support for fork lifts are located at the top of the caddy for greater stability. The dimensions of the Cylinder Caddy are 33.5" x 38" w x 36" h. This unit weighs 190 lbs.

Model	Fork Clearance	Capacity (pounds)	Weight (pounds)
D-FORK-4	2-3/4"	4,000	35
D-FORK-10	3-3/4"	10,000	40

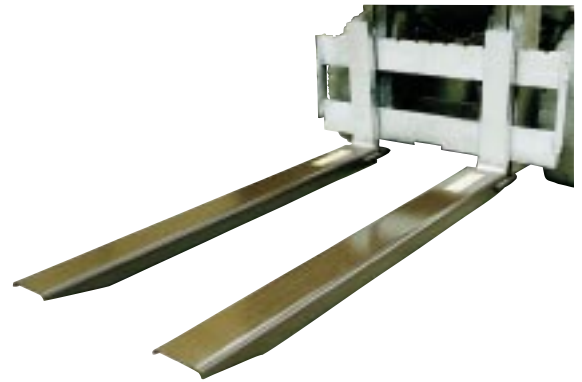
FORK EXTENSIONS

Designed to be used when large pallets or long objects need to be moved by fork truck. Constructed of steel this product gives you the strength and stability it takes to move a larger load. Designed to fit a fork up to 2" thick. A steel restraining strap prevents the fork extension from slipping off during use.

OSHA requires that extensions do not exceed length of forks by more than 50%.

FE-4-60, FE-5-60, FE-5-72 & FE-6-72

Model	Overall Width	Accommodates Fork Width	Overall Length	Weight (pounds)
FE-4-60	5"	4"	60"	97
FE-5-60	6"	5"	60"	99
FE-5-72	6"	5"	72"	121
FE-6-72	7"	6"	72"	133



WORK PLATFORM

WP-3648 & WP-4848

The **Work Platform** is a convenient and economical way to quickly and safely transport maintenance personnel where they are needed. Solid steel construction makes this product safe and durable. Designed to comply with OSHA regulations. Some standard safety features include a 4" high kick-plate surrounding the 4-way diamond tread-plate deck, 42" high handrails with 21" high mid-rails and a 60" high mesh back. The patented dual locking gate system (latching/locking) is standard. The Work Platform includes fork pockets that measure 2.5" x 7.5" on 24" centers. Each unit includes 36" safety chain and tine lock to secure the platform to the fork truck. Units are rated for 1,000 lb. capacity.

Model	Capacity (pounds)	Overall Dimensions Width	Overall Dimensions Length	Weight (pounds)
WP-3648	1,000	36"	48"	215
WP-4848	1,000	48"	48"	250



Vestil Manufacturing Company

P.O. Box 570
2999 N. Wayne Street
Angola, IN 46703
Ph. (219)665-7586
E-Mail: vestil@dmci.net

Distributed By:

Fax (219)665-1339
Web: www.vestilmfg.com

