

# Loading Dock Equipment

## DOCKLEVELER

The Fully Automatic Dock Ramp



### Specifications:

- 20,000 lbs. Capacity
- Automatic Return to Cross Traffic
- Lift Bypass Frame Prevents Damage to Obstructions/Doors
- Emergency Stop Safety Features
- Full Range Toe Guards

Model	Width	Length
RU-600-SCB	6'	6'
RU-800-SCB	6'	8'
RU-1000-SCB	6'	10'

### Options:

- Available with Legs (SU-Series)
- Available for In-Front-of-Dock (PU-Series)
- Weather Stripping
- Capacities up to 80,000 lbs.

## DOCKMATE 2

Hinged-Lip Mechanical Dock Ramp



### Specifications:

- 20,000 lbs. Capacity
- Pull Chain Actuated
- Combination Cross Traffic Supports
- Burglar Proof Lip Lock
- Below Dock Level Control
- 12" Above & Below Dock Service Range

Model	Width	Length
DM2-66	6'	6'
DM2-68	6'	8'
DM2-610	6'	10'

### Options:

- Emergency Stop System (2" incremental)
- Available for In-Front-of-Dock
- Weather Stripping
- Capacities up to 50,000 lbs.

## POWER-LIP

Electric-Hydraulic Dock Ramp



### Specifications:

- 20,000 lbs. Capacity
- Full Floating, Self-Adjusting
- Automatic Cross Traffic Return
- 55,000 psi Treadplate Dock
- 6" "C" Channel (8.2 lbs./ft.)

Model	Width	Length
EH-66	6'	6'
EH-68	6'	8'
EH-610	6'	10'

### Options:

- Emergency Stop System (2" incremental)
- Weather Stripping
- Capacities up to 80,000 lbs.
- 18" Lip

## HYDRAULIC TRUCK SCISSOR DOCK

### Design Features

- Electric Perimeter Pinch Point Guard
- Emergency Automatic Stop if Line Breaks
- 42" High Hand Rail w/21" Midrail, 4" Toeboard
- (1) 18" x 72" Split Steel Bridge Plate
- Lock-In-Place Maintenance Prop
- 6.5 Hp Motor (3-phase power)
- Capacities from 5,000 lbs. to 12,000 lbs.



### Options:

- Warning Beeper & Strobe Light
- Approach Ramp or Extra Split Steel Bridge
- Built to Meet U.S. Postal Specifications

## TRAILER LOCK

Vehicle Restraint System



ECONOMY DOCK LIGHTS

### Specifications:

- Electric or Hand Pump Hydraulic
- Complete with External and Internal Lights and Signs
- Approach Mounted
- Floats with Trailers
- Emergency Release Pin
- Limit Switch

Model	Description
TL-100-F	Deluxe Electric Hydraulic
TL-100-F-S	Economy Electric Hydraulic
TL-200-HP-F	Hand Pump Hydraulic

## EDGE-O-DOCK

Mechanical, Hand Pump & Electric

### Features:

- All Steel Construction
- Capacities Range from 6,000 lbs. to 30,000 lbs.
- 27" & 36" Long Ramping Lengths Available
- Service Range + 5"/-5" Above & Below Dock
- (2) Molded Bumpers with Bumper Blocks



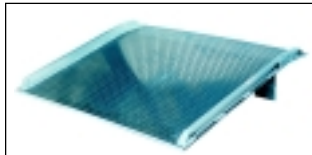
HAND PUMP DESIGN

# DOCKBOARDS

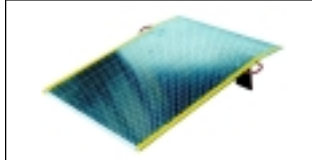
## Aluminum, Steel & Aluminum w/Steel Curbs

### Determining a Board:

- Axle Load Capacity
- Width
- Maximum Operating Angle
- Maximum Height Difference
- Length



Dockboard w/curbs for fork truck use



Dockplate w/out curbs for pallet truck & hand truck use

### Options:

- Lifting Chains
- Leverlift
- Sliding Span Locks
- Removable Pick-Up Loops
- Special Sizes Available

# WALK RAMPS

## Aluminum & Fiberglass

### Aluminum:

- Side Curbs
- Lengths of 6 to 16 ft.
- Widths of 28" or 38"
- Pallet Truck & Hand Truck
- Overlapping or Hook Style



### Fiberglass:

- Side Curbs
- Lengths of 10 to 14 ft.
- 5,000 lbs. Capacity

# YARD RAMPS

## Aluminum & Steel

### Load Ground Level to Truck, Rail Car or Dock Steel

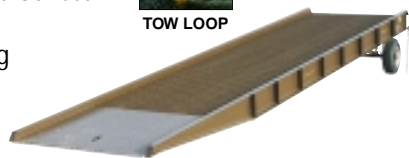
- Capacities from 15,000 lbs. to 30,000 lbs.
- Widths from 73" to 85" overall
- Height Adjustment from 45" to 62"
- Lengths available 30 and 36 feet
- 9" Steel Wheels
- Positive Traction Grating
- Custom Sizes Available



TOW LOOP



MANUAL HAND CRANK



### Aluminum

- Capacities from 16,000 lbs. to 30,000 lbs.
- Height Adjustment from 37" to 63" (M.O.R.T.)
- Lengths available 30 and 36 feet
- Widths range from 70" to 96"
- Hand Pump Hydraulic Lift
- Tow Bar

HAND PUMP HYDRAULIC LIFT



OPTIONAL PNEUMATIC TIRES



# STEEL RAILBOARDS



POP-UP FORK LIFT LOOPS

## Design Features

- 55,000 psi Steel Treadplate
- Safety Side Curbs
- Pop-up Fork Lift Loops
- Auto Drop Locks (adds 13" to width)
- Capacity 15,000 to 40,000 lb.
- Rectangular Style
- Widths 72", 84" and 108"

### Options:

- Pin Locks
- Flared, Overlap or Rectangular Style
- Safety Chains
- Special Sizes

# WHEEL RISERS

## Aluminum & Steel

### Features:

- Heights 6", 8", 10" & 12"
- 18" & 24" wide models
- Aluminum 30,000 lbs. Capacity
- Steel 40,000 lbs. Capacity
- Safety Treadplate Construction
- Side Mounted Pick-Up Tubes are Standard on Steel
- Custom Sizes Available



OPTIONAL WHEEL KIT AVAILABLE ON ALUMINUM RISERS

# DOCK BUMPERS

## Laminated, Extruded, Molded & Specialty

### Laminated

Laminated Style Dock Bumpers Provide Durable, Economical Protection for your Loading Dock and Trucks.

- Unequaled Endurance
- Resists Weathering
- Abrasion Resistant



### Extruded

- 2", 4", and 6" projections
- Lengths up to 10 feet
- For Indoor or Outdoor Use
- Many Sizes in Stock



### Molded/Specialty

- "T" & "L" Shaped
- Depths of 2, 3, or 4 inches
- Variety of Shapes & Sizes
- Many Sizes in Stock



# DOCK SEALS & DOCK SHELTERS

## Dock Seals



- Series: D-150
- Fits 8' Wide x 8' High Doors
  - Projections from 10" to 20"
  - 36 oz. Vinyl Facing
  - All Treated Lumber Construction
- Options:**
- Full Height Pleats
  - 18" Header
  - Custom Sizes Available

## Dock Seal/Shelter



- Series: D-150/650
- Fits 8' Wide x 10' High Doors
  - Projections from 10" to 20"
  - 30" Drop Flap Mounted to Header
  - 36 oz. Vinyl Facing
  - All Treated Lumber Construction
- Options:**
- Full Height Pleats
  - Custom Sizes Available

## Dock Shelter



- Series: D-750
- Fits 8' Wide x 8' High up to 10' Wide x 10' High Doors
  - 18", 24", 30" and 36" Projections
  - 36" Drop curtain (from header)
  - 2 Vertical Flaps
  - 2 Steel Guide Protectors
  - 2 Corner Protectors
  - All Treated Lumber Construction
  - Custom Sizes Available

## Retractable Shelter



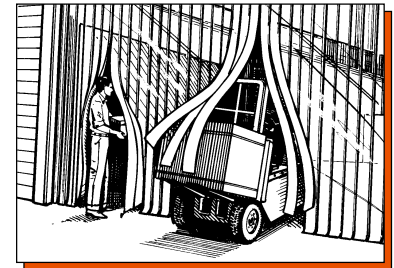
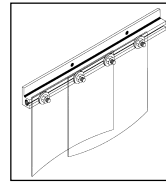
- Series: D-520
- Fits 8' Wide x 8' High up to 10' Wide x 10' High Doors
  - 24" Projection
  - 36" Drop Curtain (from header)
  - 2 Vertical Flaps
  - 2 Corner Protectors
  - Steel Construction Frame
  - Custom Sizes Available

# THERMO-GUARD VINYL STRIP DOORS

Instant opening, flexible, durable, transparent strip doors. Designed for any door where material must move and a separation of noise, temperature or dust is desired.

## Strip Door Doorways

- Custom made to fit any door opening
- Strip Doors are Preassembled for Quick and Easy Installation
- Material Available in 6", 8", 12", and 16" Wide Strips
- Choose from Header or Wall Mount
- Full or 2/3" Overlap
- Replacement Strips Available



# SAFETY BARRIERS & MACHINERY GUARDS

## A) Steel Bollards

- (Series: BOL)
- Heights Available in 24", 36" and 42"
  - Powder Coated Safety Yellow
  - Available in 4-1/2" & 5-1/2" Diameters

## B) Triple Elbow Guards

- (Series: TEG)
- Heights Available in 24", 36" & 42"
  - Powder Coated Safety Yellow
  - 4" Diameter

## C) High Profile Machine Guards

- (Series: HPRO)
- Heights Available in 24", 36" & 42"
  - Widths Available in 36" and 48"
  - Powder Coated Safety Yellow

## D) Lo-Profile Rack Guards

- (Series: LPRO)
- Heights Available in 9" and 16"
  - Widths Available in 36" and 48"
  - Powder Coated Safety Yellow

## E) Column Guards

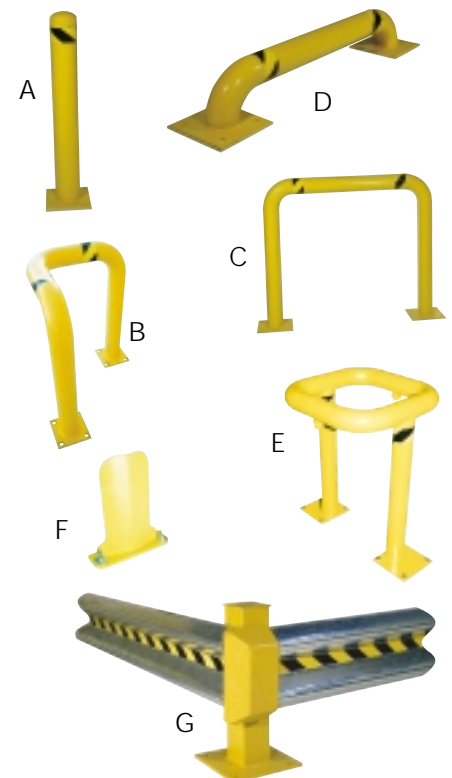
- (Series: CGP)
- 360° Column Guard
  - Heights Available in 24", 36" & 48"
  - Inside Width is 20"
  - Powder Coated Safety Yellow

## F) Low Profile Rack Guards

- (Series: NPG)
- Heights Available in 12", 18" & 24"
  - 4" or 6" Openings
  - Powder Coated Safety Yellow Finish
  - (2) 5/8" Diameter Mounting Holes
  - Many Styles to Choose From
  - Powder Coated Safety Yellow

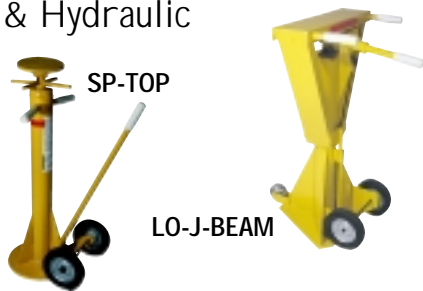
## G) Galvanized Guard Rail

- (Series: GR)
- Lengths in 4, 6, 8, 10 and 12 foot
  - 10 Gauge Rail is 12" High
  - Choose from Rigid or Spring Posts
  - Marr and Corrosion Resistant
  - End Caps and Anchor Hdwr. Available



## STABILIZING JACKS

Ratcheting, Spin Top  
& Hydraulic



Spin Top Jack  
(Series: SP-TOP)

- 100,000 lbs. Static Capacity
- 40,000 lbs. Lifting Capacity
- Service Range is 39-1/2" to 51"
- 8" Diameter Cap
- Semi-Pneumatic Wheels

Racheting Beam Jack  
(Series: LO-J-BEAM)

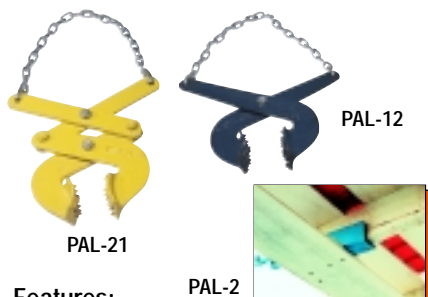
- 6" Beam
- 80,000 lbs. Static Capacity
- 40,000 lbs. Lifting Capacity
- Service Range is 39-1/2" to 51"
- 8" Wheels Front, 4" Wheel in Back

Economy Stabilizing Jack  
(Series: SJ-35)

- 50,000 lbs. Static Capacity
- Service Range is 44" to 51"
- 8" Diameter Top Cap
- 14" Weighted Dome Base
- 3" Heavy Duty Steel Tube

## PALLET PULLER

Scissor, Lo-Profile,  
Cam Action & Interlocking

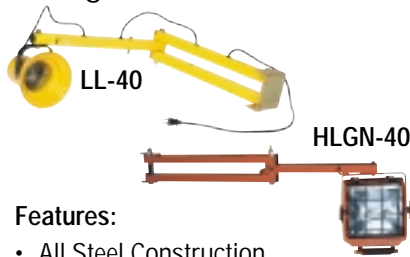


Features:

- Double & Single Scissor Design
- Cam Action Design for a Tight Grip
- Rugged Steel Construction
- 5,000 lbs. Pulling Capacity
- 20 ft. & 40 ft. Long Chain Available

## LOADING LIGHTS

Halogen or Incondescent



Features:

- All Steel Construction
- Single, Double & Triple Arms Available
- Lengths of 24", 40", 60" and 96"
- Painted Safety Yellow
- UL Listed

Options:

- 90 Watt Bulbs (PAR-38)
- Wire Guards
- Light Stands and Fans

## RATCHETING CARGO BARS

Aluminum & Steel



Features:

- Articulating Foot Pads
- E & A Track Styles Available
- 1" Square Tubing
- Service Ranges from 64" to 139"

Options:

- Aluminum or Steel
- Galvanized
- Hoops
- Folding and 1 or 2 Piece Available

## WHEEL CHOCKS

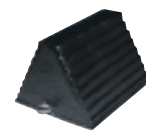
Laminated, Rubber, Aluminum, Steel, Iron & Urethane



LWC-15

Laminated (LWC-15)

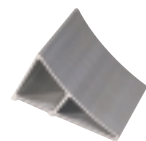
- Sloped to Fit Contour of Wheel
- Constructed of Reinforced Rubber



RWC-8

Steel (SWC-22)

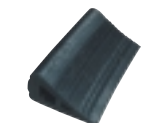
- Heavy Duty Fabricated Steel
- Painted Safety Yellow



EALUM-7

Molded Rubber (RWC-8)

- Most Popular
- Eyebolt to Attach to Optional Anti-Theft Chain



RBW-3

Urethane (URWC-15)

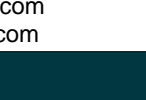
- Orange Solid Urethane Chock
- Non-Slip Tread



MS-15

Aluminum (EALUM-7)

- Serrated Edges for Positive Gripping Action
- Durable, Lightweight



MS-15

Cast Iron (MS-15)

- Cast Iron Construction
- Sloped Chock to Fit Contour of Wheel



RBW-3

Rubber Wedges (RBW-3)

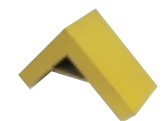
- Provides Safety for Cylindrical Objects
- Smooth Rubber Extrusion



RBW-3

Rail Chocks (SRC/FRC)

- High Visibility Safety Yellow Finish
- Available With and Without Sign



SWC-22



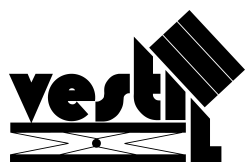
URWC-15



MS-15



(SRC/FRC)



**Vestil Manufacturing Company**

P.O. Box 570  
Angola, IN 46703  
Ph. (219)665-7586  
Fax (219)665-1339  
E-mail: sales@vestil.com  
Website: www.vestil.com

Distributed By