

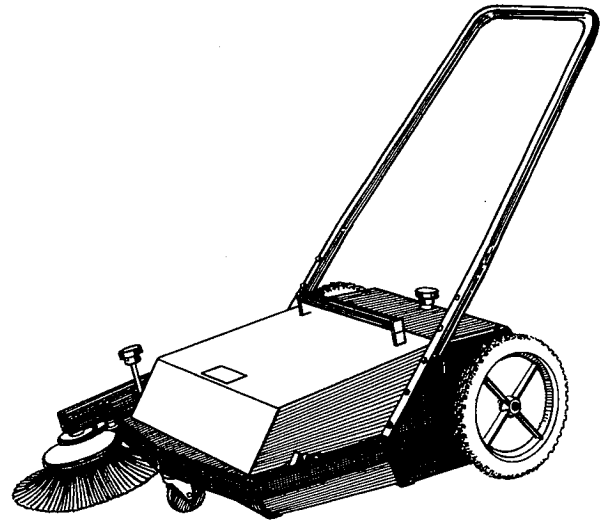
JANITOR II

Push Sweeper

SPECIFICATIONS

The Janitor II is not only lightweight, but also faster and more efficient than cleaning with a push broom. The rotation of the wheels causes the brushes to rotate and pick up material in paths of 27" across (6,500 ft²/hour approx). The side broom allows for cleaning along curbs, walls and in corners. Contains NO electric motor. Reservoir can be emptied easily and rapidly. The push sweeper may be used anywhere, anytime...indoors or out, on concrete, tile, and commercial carpets. Great in Gas Stations, Theaters, Warehouses, Industrial Plants, Parking Lots, Schools, Offices, Hospitals, etc.

MODEL	JAN-II
SWEEPING WIDTH	27" with Side Broom
MAIN BROOM	10" Dia. x 19" Long-Adjustable Height
SIDE BROOM	13" Dia. x Polypropylene Bristles - Adjustable Height
HOPPER CAPACITY	10 Gallons
WHEELS	12" Semi-Pneumatic
CASTERS	3" Rubber, Heavy-Duty Ball Bearing
HEIGHT	36" (Floor/Top of Handle)
WIDTH	30-3/8" (Wheel/O.D. of Side Broom)
LENGTH	53" (Handle/Side Broom) 41" (Excluding Handle)
OUTPUT	6,500 ft ² /hour (approx.)
UNIT WEIGHT	85 lbs.



RECEIVING INSTRUCTIONS

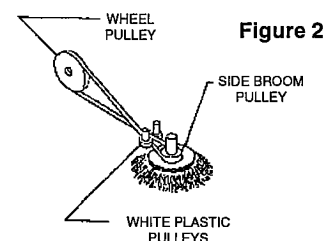
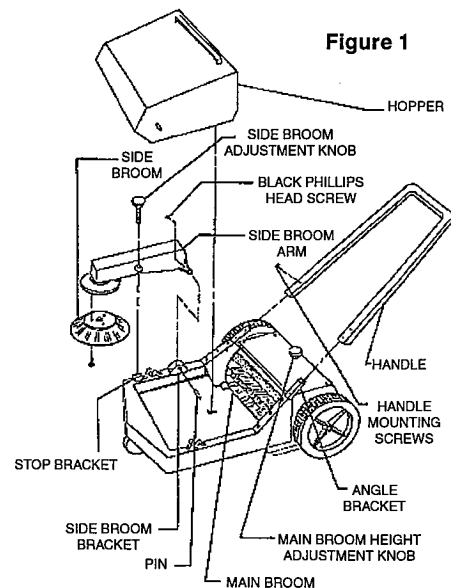
Every unit is thoroughly tested and inspected prior to shipment. However, it is possible that the unit may incur damage during transit. If you see damage when unloading, make a note of it on the BILL OF LADING.

Remove all packing and strapping material, inspect for damage. IF DAMAGE IS EVIDENT, FILE A CLAIM WITH THE CARRIER IMMEDIATELY!

ASSEMBLY INSTRUCTIONS

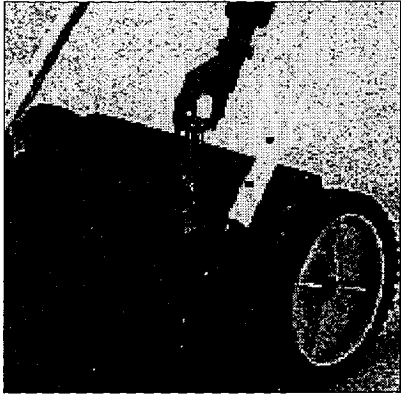
- 1.) Remove the (4) handle mounting screws from the angle brackets.
- 2.) Slide the handle over the angle brackets, line up the holes in the handle with the holes in the angle brackets and reinstall the (4) handle mounting screws.
- 3.) Pull the handle upwards and remove the hopper.
- 4.) Lower the side broom into the side broom bracket so the holes in the bracket line up with the holes in the arm.
- 5.) Slide the pin (from the hardware package) through the holes in the bracket and into the arm. Position the pin so it is centered on the bracket.
- 6.) Insert the black phillips head screw in the side broom arm as shown in Figure 1. Tighten the screw to hold the pin in place.
- 7.) Lift the right rear wheel off of the ground and install the belt around the pulley on the inside of the wheel. Pivot the side broom arm all the way up.
- 8.) Pull the belt towards the front of the machine and twist the belt ¼ turn counterclockwise.
- 9.) Lift the belt so it is outside of the side broom arm and install it around the side broom pulley.
- 10.) Route the belt between the (2) white plastic pulleys, as shown in Figure 2.
- 11.) Install the side broom on the side broom arm using the (3) screws and the (3) lock washers from the hardware package.
- 12.) Lower the side broom arm and position the belt so it runs through the side broom arm.
- 13.) Screw the side broom adjustment knob into the side broom arm

- as shown in Figure 1. Adjust the knob so 1/3 of the side broom bristles are touching the floor.
- 14.) Loosen the (2) screws that hold the side broom bracket against the chassis. Make sure the height adjustment screw is between the edges of the top bracket on the frame. Pull the side broom forward as far as the belt will allow. Tighten the screws.

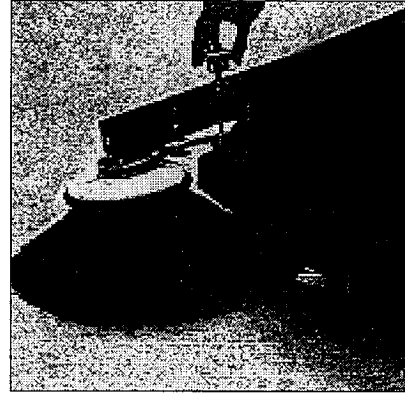


OPERATION

- 1.) Adjust the height of the main sweeping broom so the bristles just touch the floor. Sweeping performance will be poor and the machine will be hard to push if the main broom is set too low.

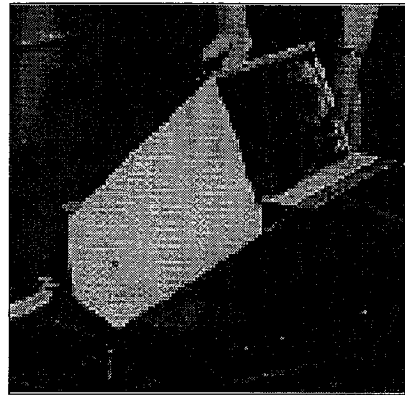
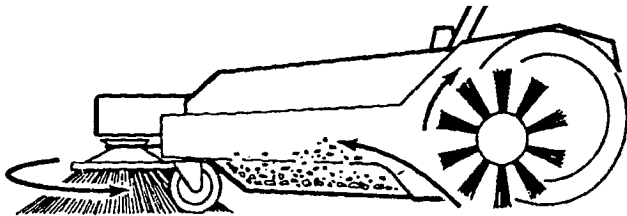


- 2.) Lower the side broom when sweeping along curbs or walls. Lift the side broom when sweeping in an open area to avoid raising dust. Adjust the side broom height so that 1/3 of the bristles are touching the floor.



- 3.) Push the machine forward at a comfortable pace. The machine will not sweep when it is pulled backwards.

- 4.) Lift the hopper off the sweeper and empty it after each use, or whenever debris is left behind the sweeping path.



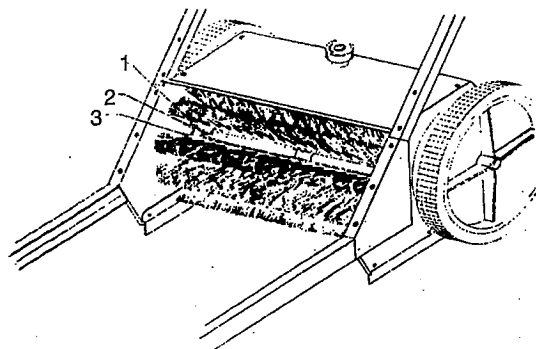
MAINTENANCE

MONTHLY

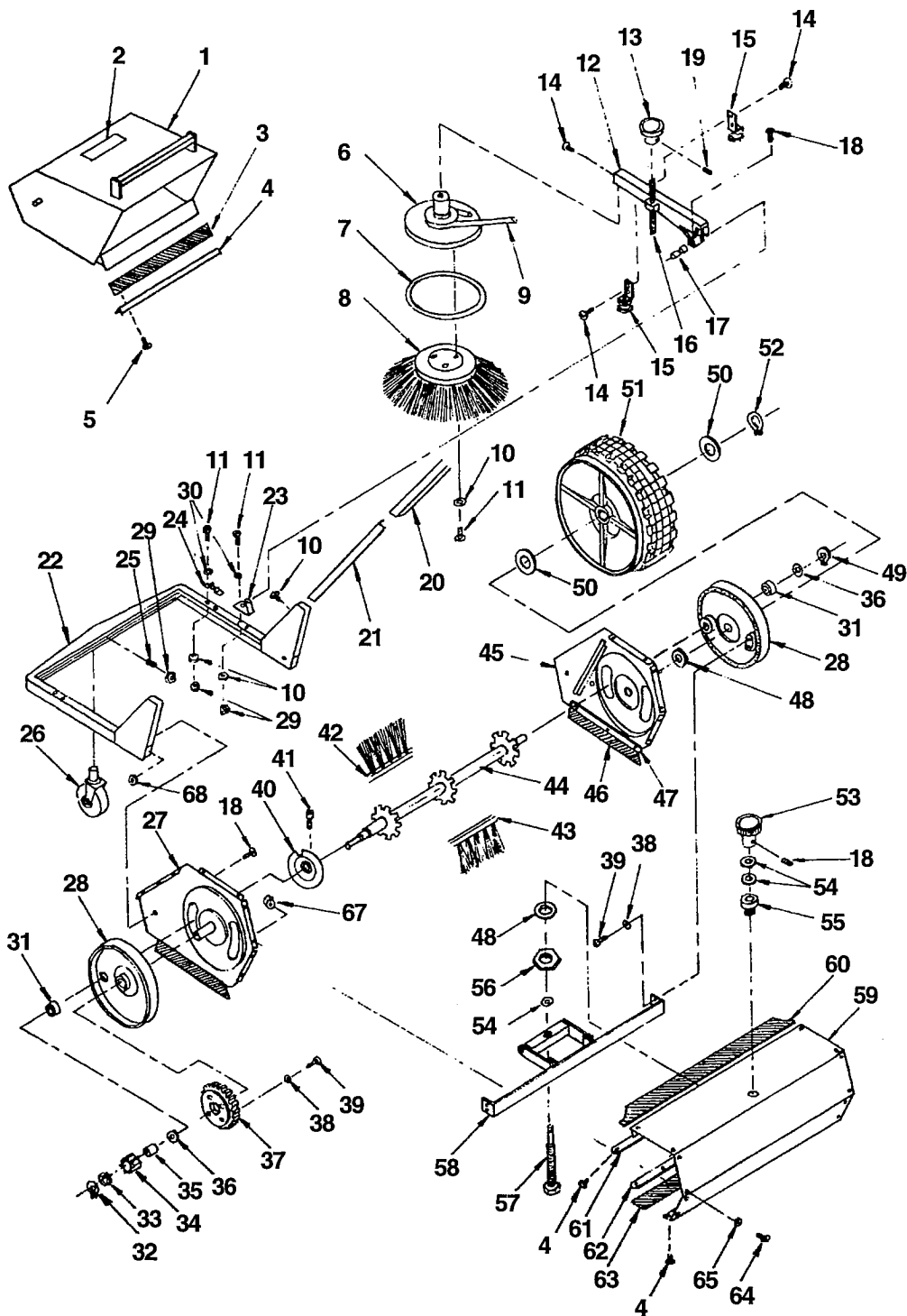
- 1.) Tip the machine on its side and remove any string that is wrapped around the main sweeping broom.
- 2.) Lubricate the front caster with light machine oil.
- 3.) Inspect the bumper skirt on the hopper. Replace the skirt if it is torn.

EVERY 6 MONTHS

- 1.) Inspect the rubber skirts on each side and behind the sweeping broom. Replace the skirt if it is torn.
- 2.) Tip the machine on its side and inspect the main broom for wear. Replace the broom when the bristles are worn to a length of 1 1/2 inches.



JAN-II EXPLODED PARTS DRAWING



ITEM	PART NO.	DESCRIPTION	QTY.	PRICE EACH
1	191 316	Hopper Assembly	1	\$111.00
2	190 075	Decal	1	1.50
3	196 334	Hopper Skirt	1	4.02
4	191 344	Angle	1	3.45
5	194 410	Screw M4 x 0.7 x 10	30	4.50
6	192 392	Pulley Assembly	1	51.90
7	192 384	Bumper, side Broom	1	1.20
8	195 179	Broom, Side	1	21.60
9	192 203	"V" Belt	1	8.64
10	195 206	Spring Washer, M6	13	1.95
11	194 616	Screw M6 x 16	15	1.80
12	192 366	Arm, Weldment	1	20.40
13	192 480	Knob, Side Broom	1	7.20

JAN-II PARTS LIST

ITEM	PART NO	DESCRIPTION	QTY	PRICE EACH
14	194 612	Screw M6 x 12	1	\$12.00
15	192 403	Idler Assembly	16	6.00
16	192 414	Stud Adjustment	2	1.50
17	192 418	Pin Arm	1	1.20
18	194 510	Screw M5 x 0.8 x 10	1	.60
19	194 613	Socket Set 10-24 x 1/2	5	1.20
20	190 256	Handle	2	20.40
21	190 264	Angle Handle	1	8.64
22	190 288	Frame Weldment	2	42.00
23	190 252	Bracket, Side Broom	1	2.40
24	190 260	Guide, Hopper	1	4.62
25	194 713	Socket Set 1/4-20 x 1/2	2	.60
26	190 252	Caster 3" Assembly	1	8.40
27	190 446	Panel, Left	1	26.10
28	190 440	Shroud	1	6.30
29	196 601	Nut M6 x 1.0	2	.72
30	195 106	Flat Washer M6	7	3.00
31	198 203	Bearing, 602322 ZZ	6	26.10
32	199 012	Ring S-12	3	.60
33	195 113	Washer 1.5 x 13.1 x 23	1	.45
34	193 466	Pinion	1	2.70
35	193 394	Clutch	1	33.00
36	195 118	Washer 2.0 x 17.6 x 32	1	1.50
37	193 444	Gear Nylon	3	3.90
38	195 205	Spring Washer, M5	1	.90
39	194 516	Screw 5 x 16	4	.36
40	193 462	Brush Support	4	4.32
41	194 613	Socket Cap Screw, M6	1	.90
42	193 488	Brush Rails 0.15 MM	1	29.10
43	193 489	Brush Rails 0.25 MM	5	29.10
44	193 464	Shaft	5	18.90
45	190 456	Panel, Right	1	26.10
46	197 454	Skirt, Side	1	6.90
47	190 486	Plate, Skirt	2	6.90
48	195 121	Washer 2.0 x 21.1 x 40.1	2	2.70
49	199 017	Ring S-17	3	.75
50	195 177	Washer 2.0 x 16.4 x 32	1	2.40
51	190 432	Wheel 12"	2	40.20
52	199 016	Ring S-16	2	1.20
53	192 481	Knob, Main Broom	2	7.20
54	195 111	Washer 1.2 x 10.5 x 25.4	1	1.20
55	193 474	Pivot Assembly	3	4.74
56	196 019	Nut 1/2 Pt.	1	2.25
57	193 478	Stud Adjustment	1	2.10
58	193 350	Bracket	1	11.40
59	190 482	Panel, Cover	1	42.00
60	197 468	Skirt, Hopper	1	3.00
61	190 470	Plate	1	3.45
62	190 494	Panel, Skirt	1	3.45
63	197 492	Skirt	1	3.75
64	194 408	Screw M4 x 0.7	12	1.80
65	195 304	Washer, Hopper	12	.72

T & S Equipment Company

2999 North Wayne Street
 Angola, IN 46703
 Phone: (219)665-7586
 Fax: (219)665-1339